

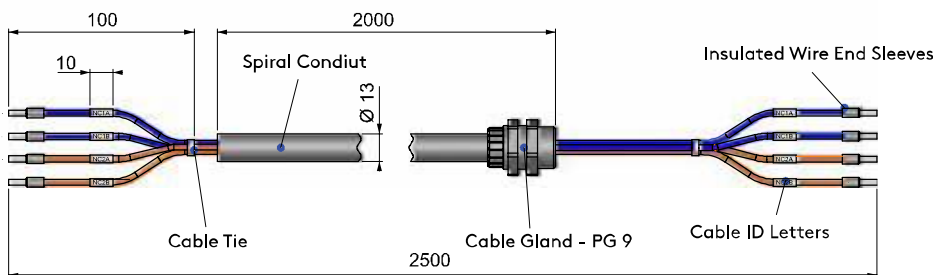
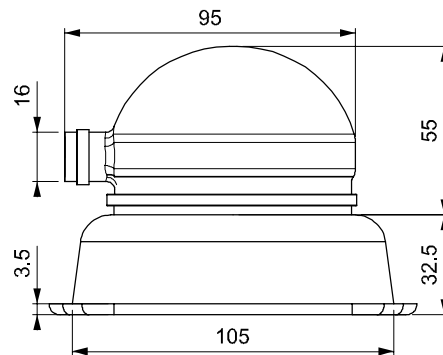
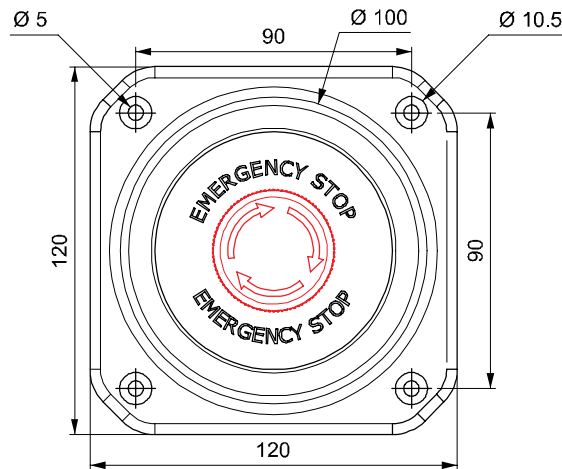
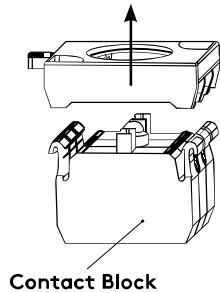
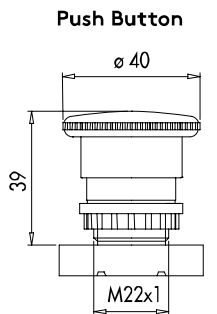


3501

EMERGENCY STOP BUTTON



IP 65



- Easy to install
- Different contact options (max. 3 contact)
- Standard wire length is 2.5 m  
Standard conduit length is 2 m

## APPLICATIONS

Generators

## MATERIAL

BOWL: Polyamid DIN-EN ISO 1043-1 PA6 GFR 30

PROTECTIVE COVER: PVC

GASKET: EPDM

SPIRAL CONDUIT: PA6

CABLE GLAND: PA66

## BUTTON SPECIFICATIONS

Mechanical Life : 500.000 operations min.

Electrical Life : 100.000 operations min.

Operating Temperature : min./max. °C  
-5/+40

Protection Degree : IP65

Operating Frequency : Without load 3000

oper./hour - At full load 1200 oper./hour

Rated Operating Voltage  $U_e$  : 230 V AC

Rated Operating Current  $I_e$  : 4 A

Insulation Voltage  $U_i$  : 300 V

Stroke Resistance Voltage  $U_{imp}$  : 2.5 kV

Standard Contact Material : AgNi

Insulation Resistance : 10 MΩ min.  
(500 V DC)

Dielectrical Strength :

Between body-contact: 2000 V AC

Open contact : 1500 V AC

Connection Cable Cross-Section :

1.5-2.5 mm<sup>2</sup>

Standard : UL 508/TS EN 60947-5-1/

VDE0660/IEC 60393-1

Contact Block Type		Product Code
Normally Open	Normally Closed	
		3501.V
-	1	3501.1
-	2	3501.2
1	1	3501.3
1	-	3501.4
2	-	3501.5

**COMPRESSION LOCK**

**077**



*LH/RH*

*RoHS*



- Available with or without cylinder
- 24mm - 46 mm grip adjustment
- Suitable for maximum 2 mm door thickness
- Assemble lock with one fixing bracket

**APPLICATIONS**

Generators, compressors, electric panels, machinery covers

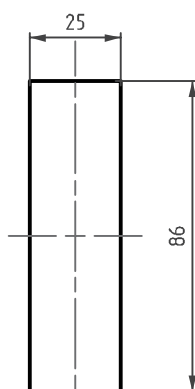
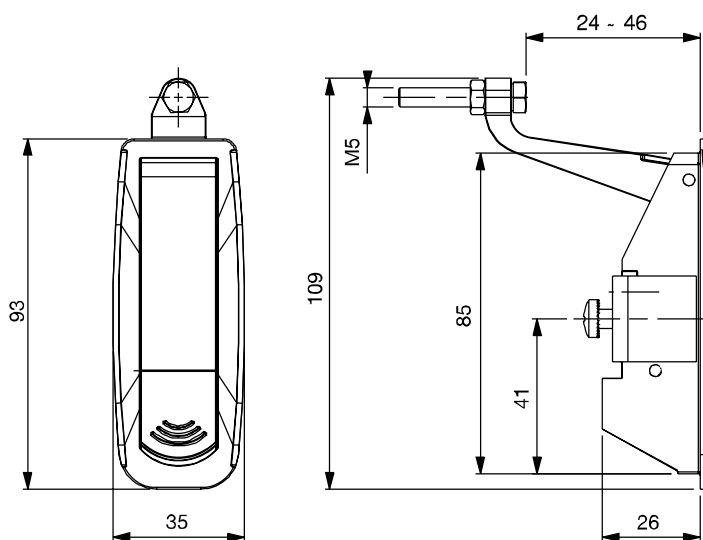
**MATERIAL**

BODY: Zamak DIN-EN 1774-ZnAl4Cu1

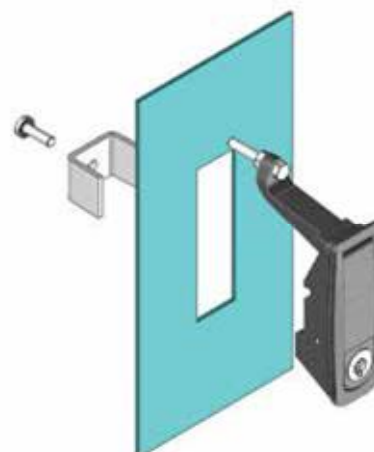
HANDLE: Zamak DIN-EN 1774-ZnAl4Cu1

FIXING BRACKET: Steel

**V** :1



Cut out

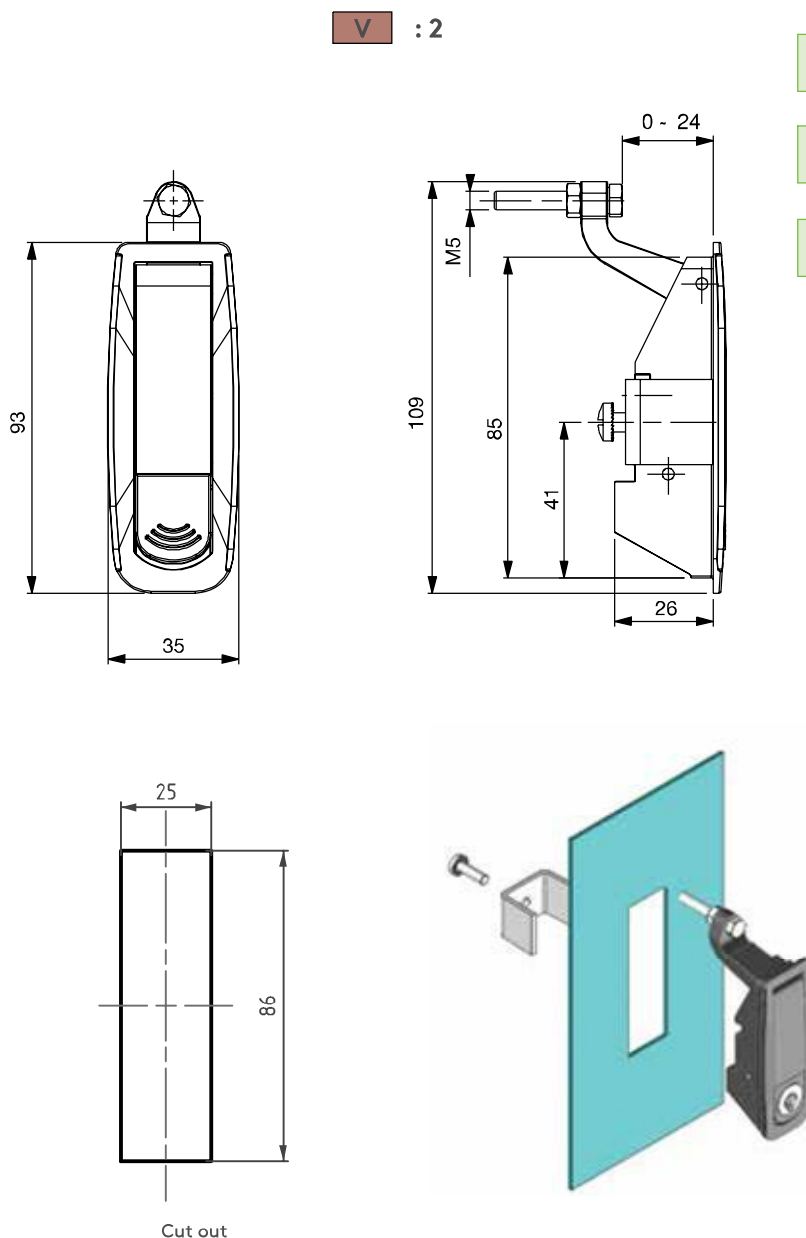


**PRODUCT CODE**

**077** - **1** - **F** - **DD**  
GROUP CODE VERSION FINISH CYLINDER

FINISH	F
Chrome	1
Black coated	2

SPECIFICATIONS	DD
No cylinder	00
Keyed alike	01
Keyed differ	02
Euro Key	03
CH751 (Stainless steel dust cap)	07



077

COMPRESSION LOCK



LH/RH

RoHS



- Available with or without cylinder
- 0 mm – 24 mm grip adjustment
- Suitable for maximum 2 mm door thickness
- Assemble lock with one fixing bracket

## APPLICATIONS

Generators, compressors, electric panels, machinery covers

## MATERIAL

BODY: Zamak DIN-EN 1774-ZnAl4Cu1  
HANDLE: Zamak DIN-EN 1774-ZnAl4Cu1  
FIXING BRACKET: Steel

## PRODUCT CODE

077 - 2 - F - DD  
GROUP CODE VERSION FINISH CYLINDER

FINISH	F
Chrome	1
Black coated	2

SPECIFICATIONS	DD
No cylinder	00
Keyed alike	01
Keyed differ	02
Euro Key	03
CH751 (Stainless steel dust cap)	07

## COMPRESSION LOCK

177



Driver System



No Cylinder



- Available with or without cylinder
- 24mm – 46 mm grip adjustment
- Suitable for maximum 2 mm door thickness
- Assemble lock with one fixing bracket

### APPLICATIONS

Generators, compressors, electric panels, machinery covers

### MATERIAL

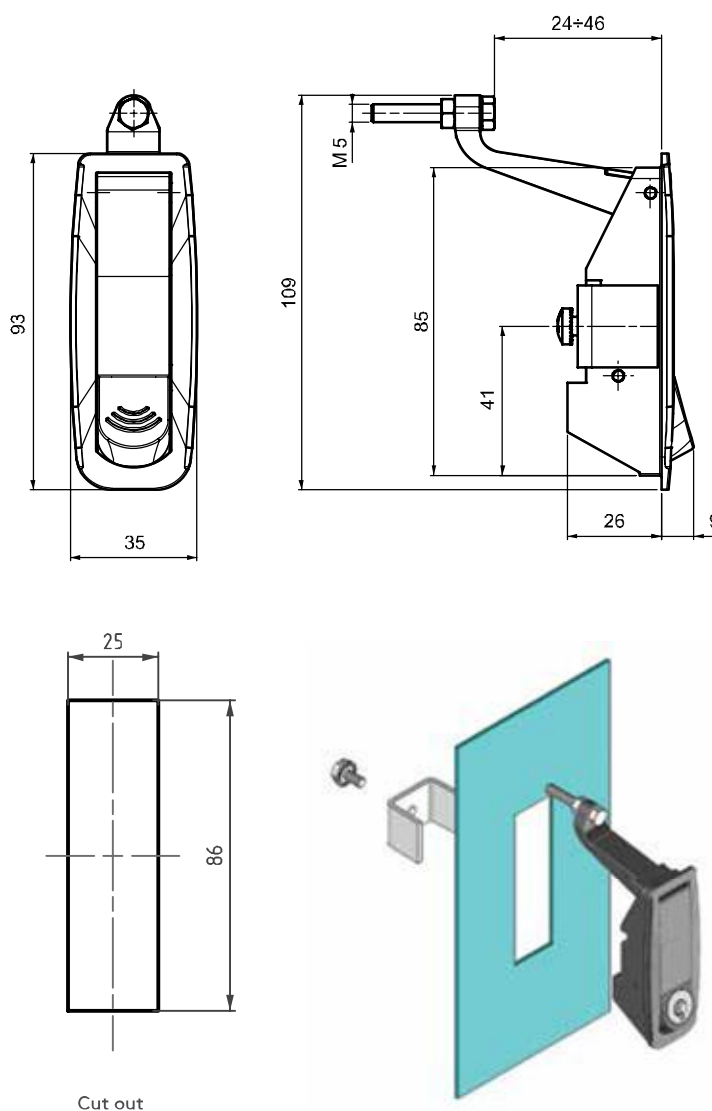
BODY: Zamak DIN-EN 1774-ZnAl4Cu1  
HANDLE: Zamak DIN-EN 1774-ZnAl4Cu1  
FIXING BRACKET: Steel



LH/RH

RoHS

V :1



### PRODUCT CODE

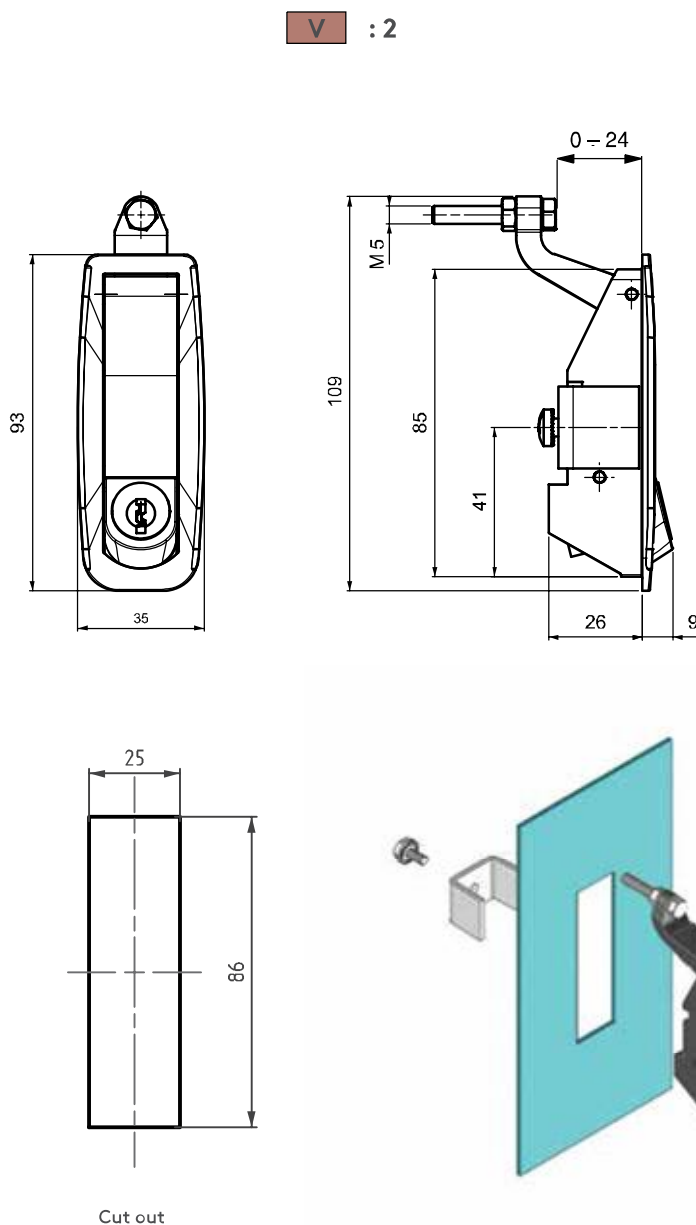
177 - 1 - F - DD  
GROUP CODE VERSION FINISH CYLINDER DRIVER

FINISH	F
Chrome	1
Black coated	2

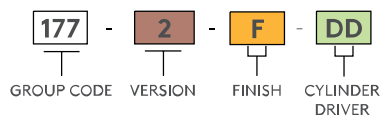
SPECIFICATIONS	DD
No cylinder	00
Keyed alike	01
Keyed differ	02
Euro Key	03
CH751 (Stainless steel dust cap)	07

DRIVER
Slot
DD
42






## PRODUCT CODE



FINISH	F
Chrome	1
Black coated	2

SPECIFICATIONS	DD
No cylinder	00
Keyed alike	01
Keyed differ	02
Euro Key	03
CH751 (Stainless steel dust cap)	07

DRIVER
Slot
DD
42



177

COMPRESSION LOCK



LH/RH

RoHS



Driver System



No Cylinder



- Available with or without cylinder
- 0 mm – 24 mm grip adjustment
- Suitable for maximum 2 mm door thickness
- Assemble lock with one fixing bracket

## APPLICATIONS

Generators, compressors, electric panels, machinery covers

## MATERIAL

BODY: Zamak DIN-EN 1774-ZnAl4Cu1  
HANDLE: Zamak DIN-EN 1774-ZnAl4Cu1  
FIXING BRACKET: Steel

## LIFT-AND-TURN LOCK

170

ALL IN METAL



LH/RH

RoHS

- For cabinets that require better sealing under vibrating conditions
- Provides 5 mm of compression
- Provides noise isolation
- Three cam alternatives available

### APPLICATIONS

Electric panels, machinery covers, railway applications, construction equipment

### MATERIAL

HOUSING: Zamak DIN-EN 1774-ZnAl4Cu1

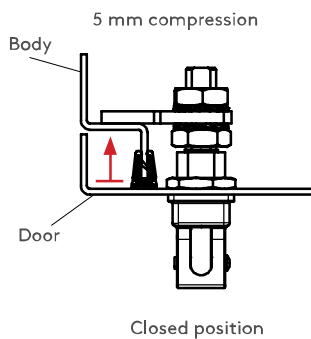
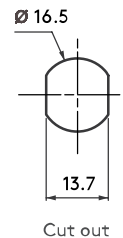
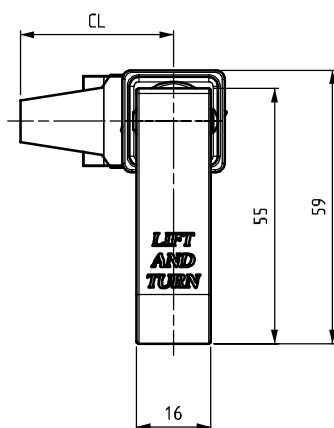
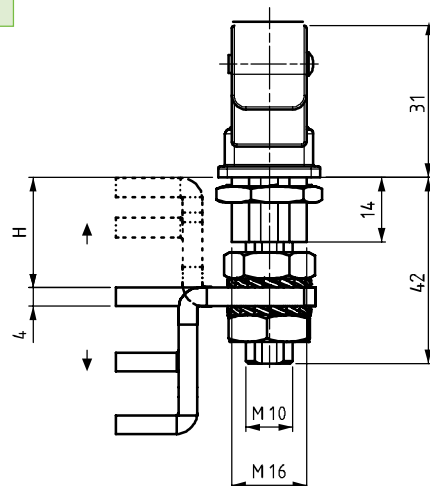
HANDLE: Zamak DIN-EN 1774-ZnAl4Cu1

CAM: Steel

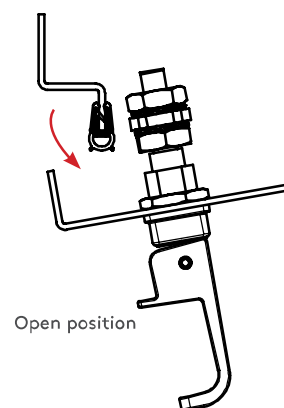
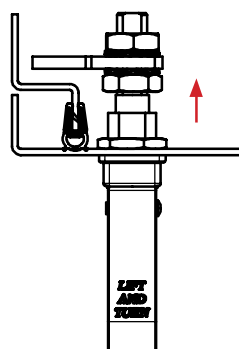
### FINISH

Chrome plated or black coated

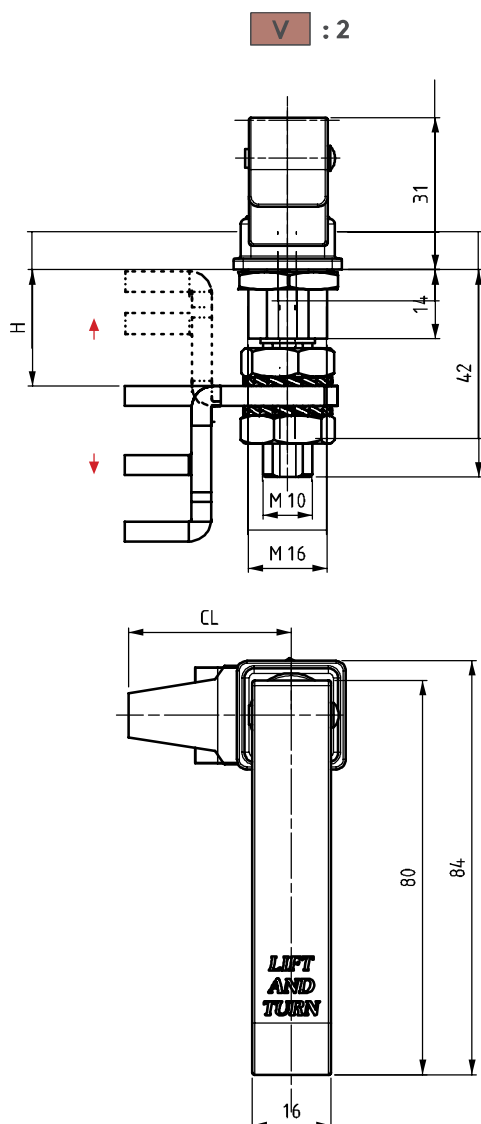
V : 1



Closed position



Open position



170

## LIFT-AND-TURN LOCK

ALL IN METAL



- For cabinets that require better sealing under vibrating conditions
- Lock provides 5 mm of compression
- Provides noise isolation
- Three cam alternatives available

### APPLICATIONS

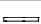

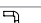
Electric panels, machinery covers, railway applications, construction equipment

### MATERIAL

HOUSING: Zamak DIN-EN 1774-ZnAl4Cu1  
HANDLE: Zamak DIN-EN 1774-ZnAl4Cu1  
CAM : Steel

### FINISH

Chrome plated or black coated

CAM	CC	CH	CL	H GRIP	
				MIN CAM ↑	MAX CAM ↓
1 	01	0	33	22.5	30
2 	02	14	33	8.5	44
3 	03	27.5	33	0	57.5

### PRODUCT CODE

170 - V - 1 - F - CC  
GROUP CODE VERSION MATERIAL FINISH CAM

FINISH	F
Chrome	1
Black coated	2

### LIFT-AND-TURN LOCK

070



LH/RH

RoHS

- Suitable for steel and polyester panels
- Provides 5 mm of compression

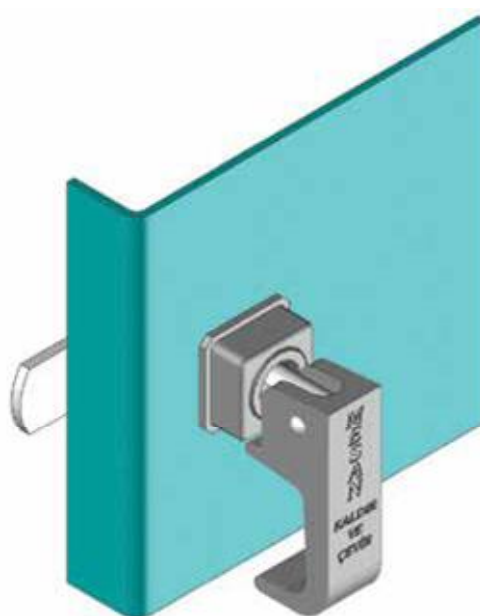
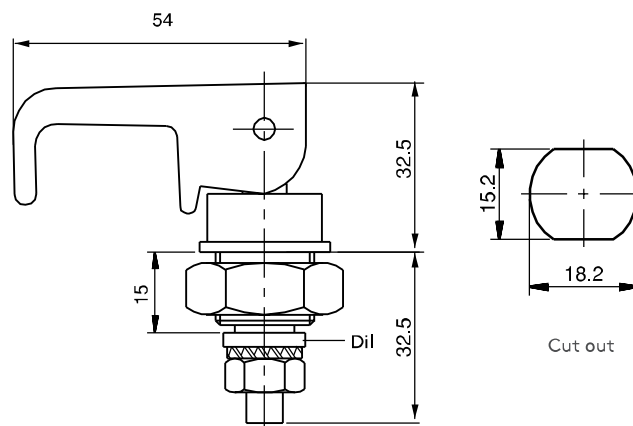
#### APPLICATIONS

Electric panels, machinery covers

#### MATERIAL

BODY: Polyamide DIN-EN ISO 1043-1 PA6 GFR 30

CAM: Steel





072

## FUNCTIONAL LOCK

IP 54



LH

RH



RoHS



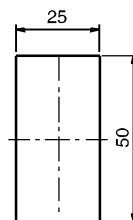
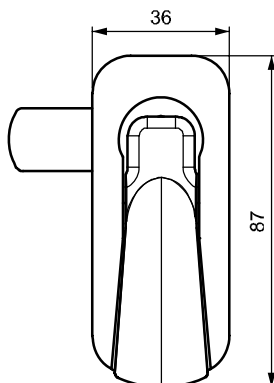
- Suitable for steel and polyester panels
- Standard cut out for both versions
- Clip fixing version suitable for panels with thickness of between 0.8 mm and 2 mm

### APPLICATIONS

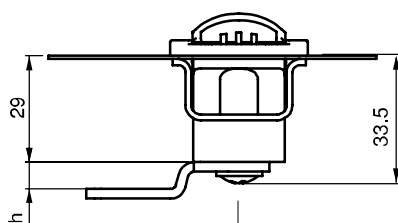
Electric panels, machinery covers

### MATERIAL

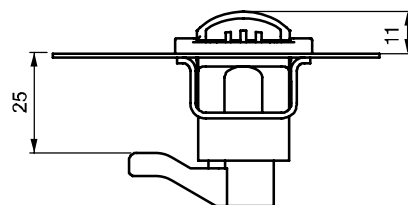
BODY: Polyamide DIN-EN ISO 1043-1 PA6 GFR 30  
CAM: Steel or PA6 GFR 30



Cut out



Steel cam



Plastic cam  
CC: 80

V :1



V :2

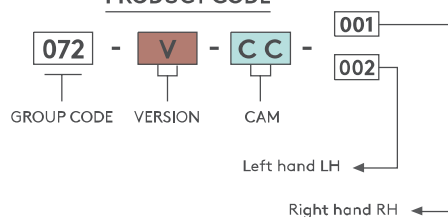
Clip-in fixing



DT	
Min	Max
0.8mm	2mm

DT (DOOR THICKNESS)

### PRODUCT CODE



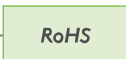
 For cams please check page: 149

**SWELL LOCK**

**270**



LH/RH



RoHS



- Used for the cabinets that require better under vibration conditions.
- It is suitable with special cut out for different frame thickness.

**APPLICATIONS**

Electric panels, machinery covers, railway applications, construction equipment

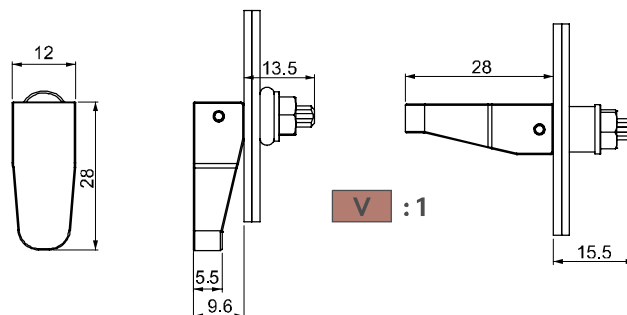
**MATERIAL**

HANDLE: Polyamide DIN-EN ISO 1043-1 PA6 GFR 30

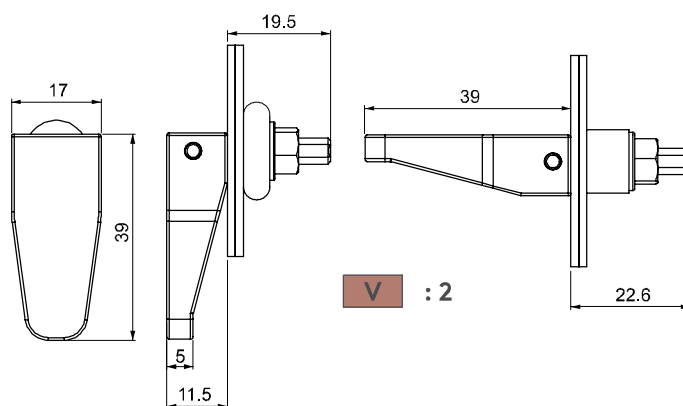
WASHER: PA66

NUT : PA66

BUSHING : SBR Rubber



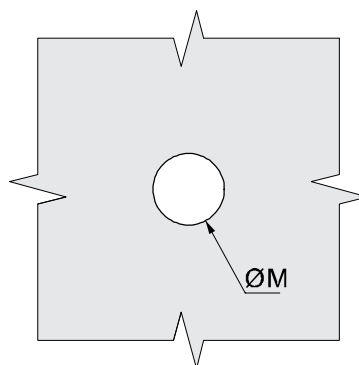
**V : 1**



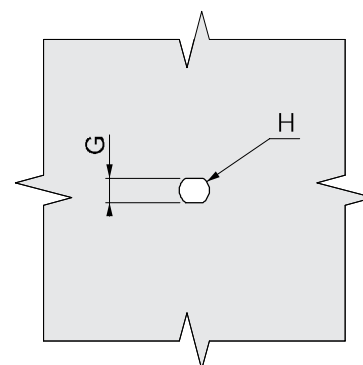
**V : 2**

Back

Front

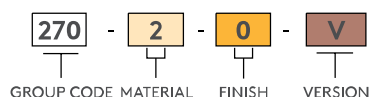


Cut Out



VERSION	G +0.1 -0.0	H +0.1 -0.0	FRAME THICKNESS	CUT OUT ØM
1	3.3	4.1	3.2	9.5
2	4.5	5.8	Up to 3.2	13.5
			3.2 - 4.8	14

**PRODUCT CODE**



270

SWELL LOCK



LH/RH

RoHS



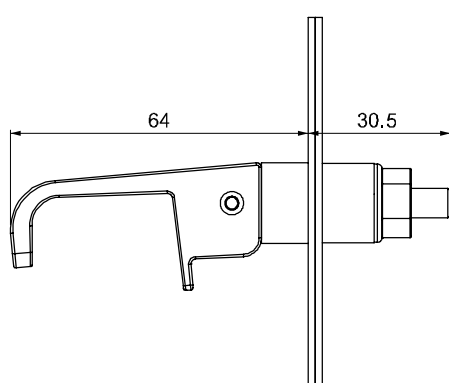
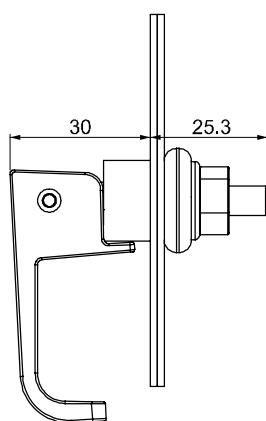
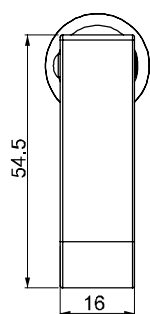
- Used for the cabinets that require better under vibration conditions.
- It is suitable with special cut out for different frame thickness.

## APPLICATIONS

Electric panels, machinery covers, railway applications, construction equipment

## MATERIAL

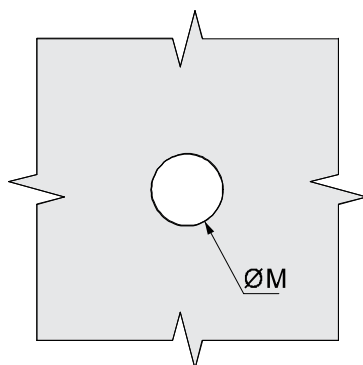
HANDLE: Zamak DIN-EN 1774-ZnAl4Cu1  
WASHER: PA66  
NUT : PA66  
BUSHING : SBR Rubber



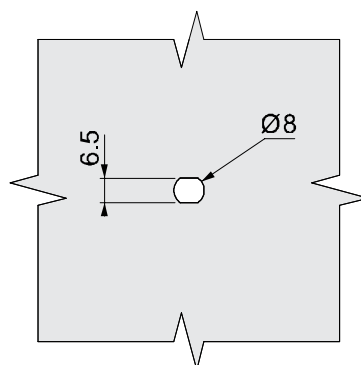
V : 3

Back

Front



Cut Out



FRAME THICKNESS	CUT OUT ØM
1.2-3.2	19
3.2-4.8	19.5
4.8-6.4	20
6.4 and up	20.5

## PRODUCT CODE

270 - 
 2 - 
 0 - 
 3  
 GROUP CODE MATERIAL FINISH VERSION

SLIDING LOCK

071



LH/RH

- Easy fixing
- Long-lasting stainless steel spring
- Suitable for panel thicknesses of between 0.8 mm and 1.5 mm

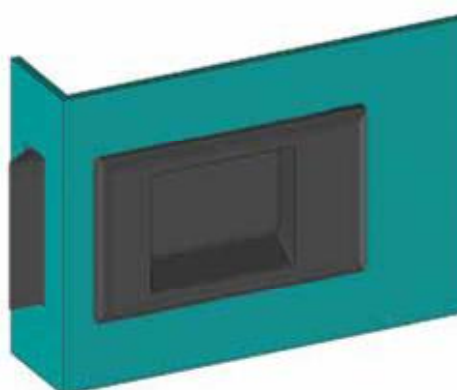
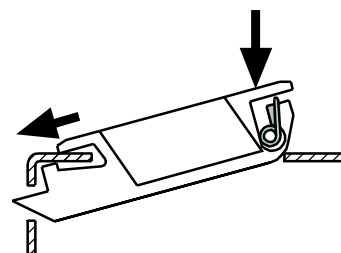
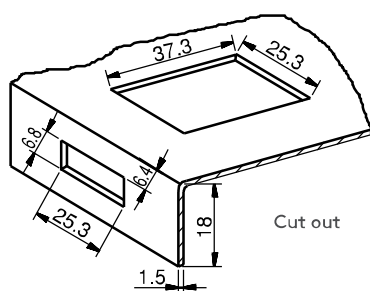
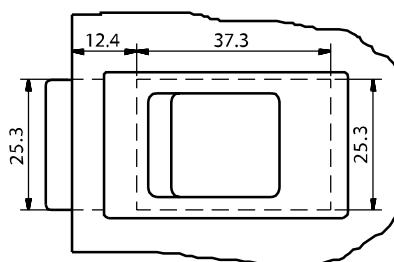
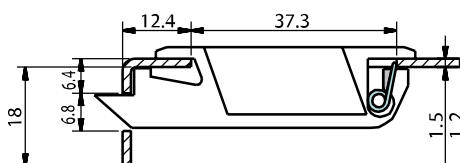
APPLICATIONS

Small metal machinery covers

MATERIAL

BODY: ABS

SPRING: Stainless Steel



SPECIFICATIONS	PRODUCT CODE
0.8 -1.2 mm thickness panel	071.12
1.2 -1.5 mm thickness panel	071.15

371

SLIDING LOCK



LH/RH



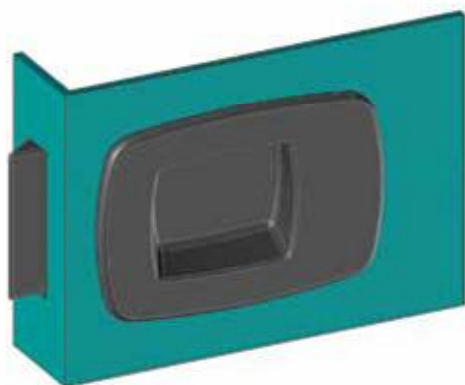
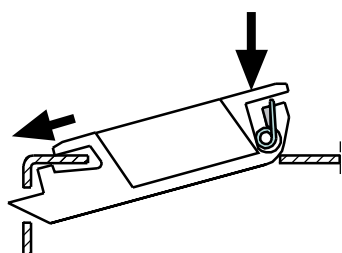
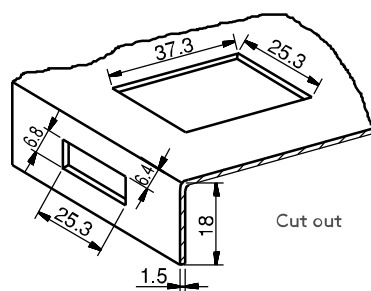
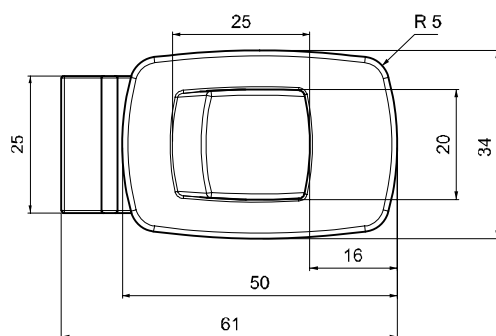
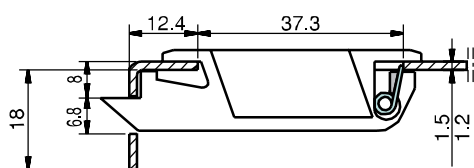
- Stylish design
- Easy fixing
- Long-lasting spring
- Suitable for panel thicknesses of between 0.8 mm and 1.5 mm
- Suitable for small doors
- For different colour choices please contact Essentra Components

## APPLICATIONS

Small metal machinery covers

## MATERIAL

BODY: ABS  
SPRING: Stainless Steel



SPECIFICATIONS	PRODUCT CODE
0.8 -1.2 mm thickness panel	371.12
1.2 -1.5 mm thickness panel	371.15

## SLIDING LOCK

571



LH/RH



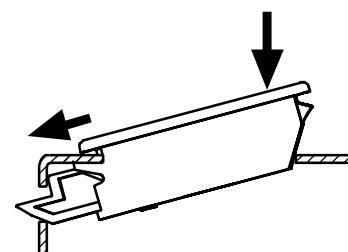
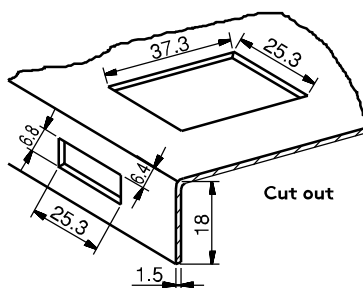
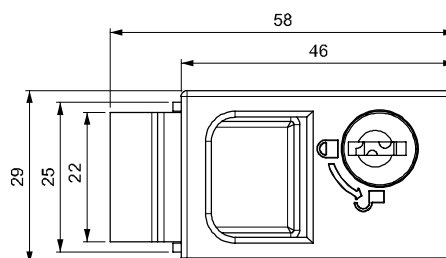
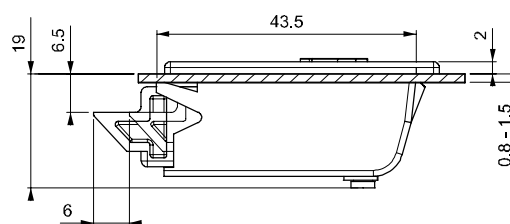
- Cylinder Locking System
- Two pieces design eliminates the paint problems on doors.
- Suitable for small size doors
- Easy assembly is possible with clips on the body
- Suitable for panel thicknesses of 0.8 - 1.5 mm

### APPLICATIONS

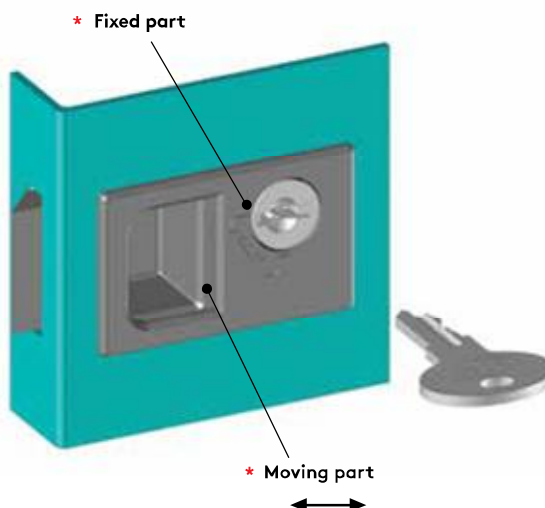
Small metal covers

### MATERIAL

BODY: PA6 GFR 30  
SPRING: Stainless steel  
CYLINDER: Zamak DIN-EN 1774-ZnAl4Cu1



Follow the arrows instruction for assembly  
Open or close supplied by internal movable parts



### PRODUCT CODE

571 - DD

GROUP CODE

CYLINDER

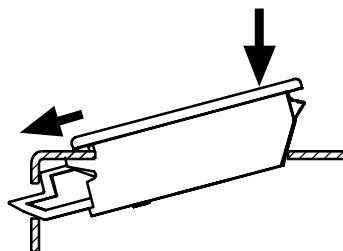
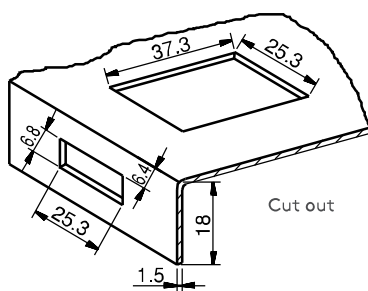
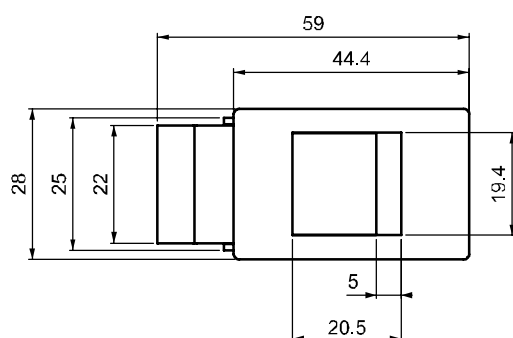
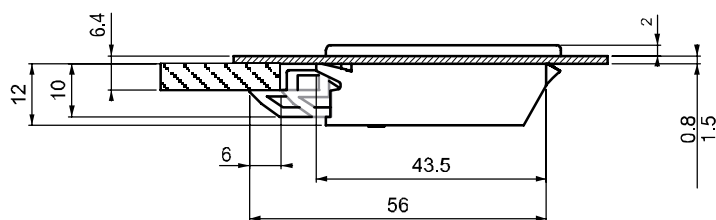
CYLINDER		DD
	Stainless steel dust cap (Keyed alike)	03
	Stainless steel dust cap (Keyed differ)	32

271

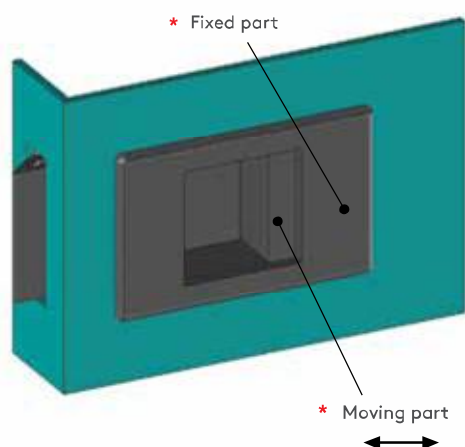
SLIDING LOCK



LH/RH



Follow the arrows for assembly instructions;  
open or close with internal movable parts



- Two-piece design eliminates paint problems on doors
- Suitable for small doors
- Easy assembly with clips on body
- Suitable for panel thicknesses of between 0.8 mm and 1.5 mm

## APPLICATIONS

Small metal machinery covers

## MATERIAL

BODY: PA6 GFR 30

SPRING: Stainless Steel

**MINI SLIDING LOCK**

**471**



*LH/RH*

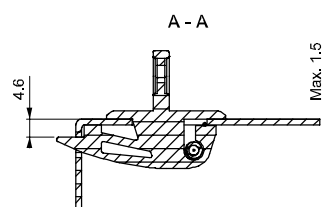
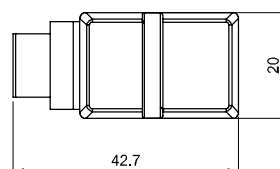
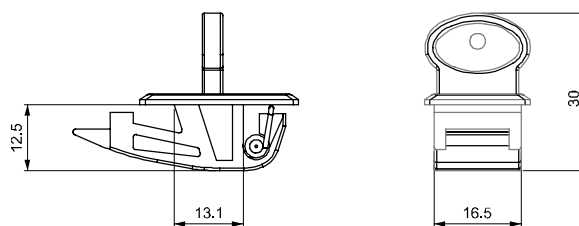
- Suitable for small doors inside panels
- Suitable for panel thicknesses of 0.8 mm to 1.5 mm.

**APPLICATIONS**

Small metal covers

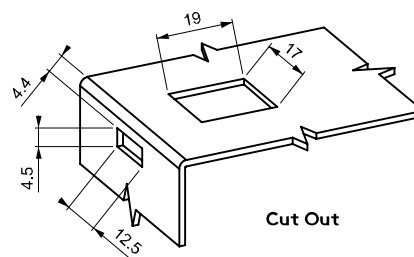
**MATERIAL**

BODY: ABS  
SPRING: Stainless steel



**DOOR THICKNESS**

Min	Max
0.8 mm	1.5 mm



SPECIFICATIONS	PRODUCT CODE
0.8 -1.2 mm thickness panel	<b>471.12</b>
1.2 -1.5 mm thickness panel	<b>471.15</b>



171

## MINI SLIDING LOCK



LH/RH



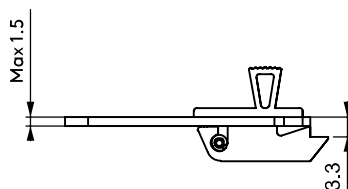
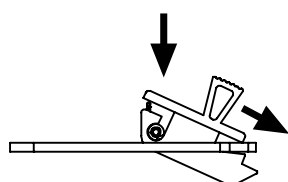
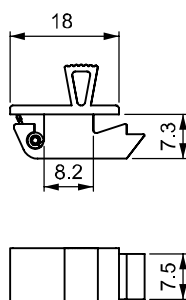
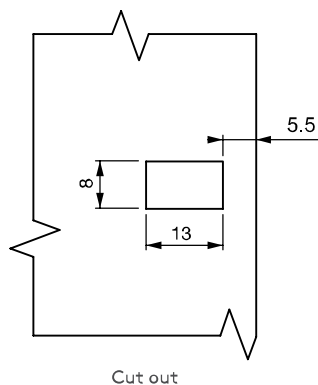
- Suitable for small doors and inside panels
- Suitable for panel thicknesses of between 0.8 mm and 1.5 mm

### APPLICATIONS

Small metal machinery covers

### MATERIAL

BODY: ABS  
SPRING: Stainless Steel



### DOOR THICKNESS

Min	Max
0.8mm	1.5mm



**MINI LOCK**

**466**



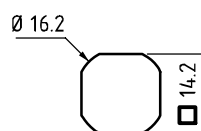
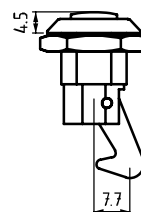
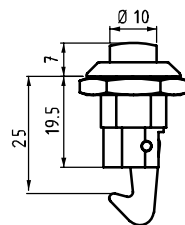
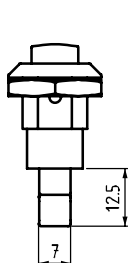
- Easily opened by pressing button
- Suitable for small doors

**APPLICATIONS**

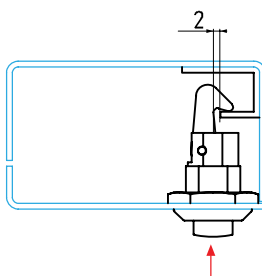
Electric panels, machinery covers

**MATERIAL**

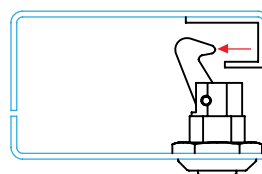
HOUSING: Zamak DIN-EN 1774-ZnAl4Cu1  
 BUTTON: Zamak DIN-EN 1774-ZnAl4Cu1  
 CAM: Zamak DIN-EN 1774-ZnAl4Cu1



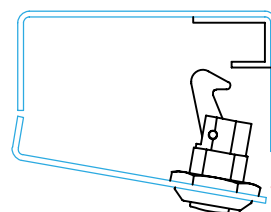
Cut out



Position 1  
Press button



Position 2  
Hook cam opens



Position 3  
Door opens

**PRODUCT CODE**

**466** - **1** - **F**  
 GROUP CODE MATERIAL FINISH

MATERIAL	F
Zamak	1

FINISH	F
Chrome	1
Black coated	2

183

## QUARTER-TURN LOCK

RoHS



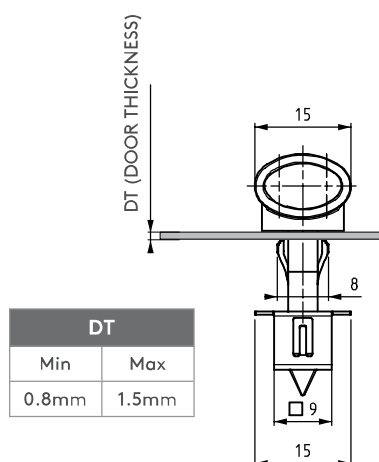
- Fix small panels to frame with ease
- Quarter-turn locking
- Easy assembly
- For doors with a bend of 24 mm

### APPLICATIONS

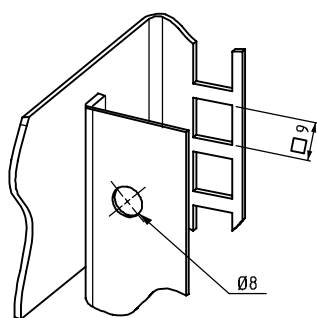
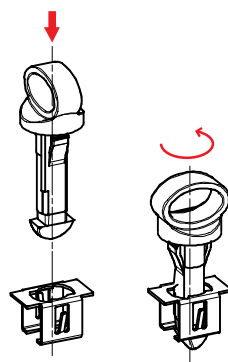
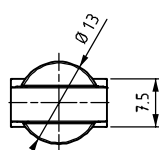
Electric panels

### MATERIAL

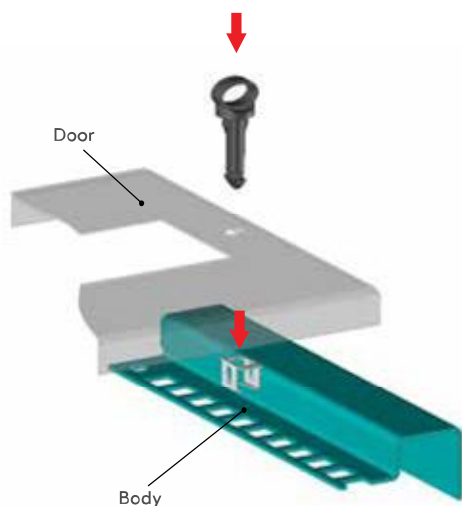
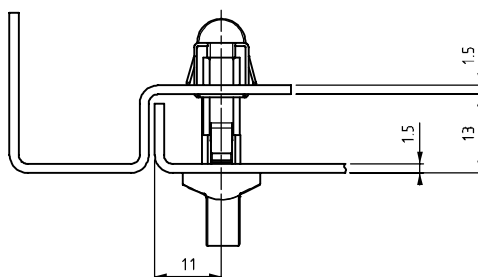
HANDLE: ABS  
FRAME PART: Steel



DT	
Min	Max
0.8mm	1.5mm

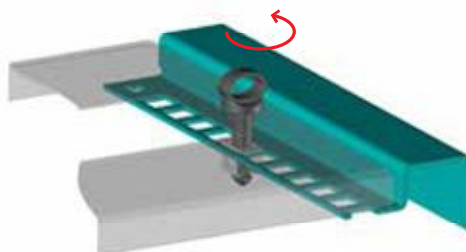


Cut out



Door

Body



## HOOKED LOCK

176



- Used for locking back doors of generators without external lock
- Can open from inside by moving cam

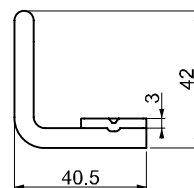
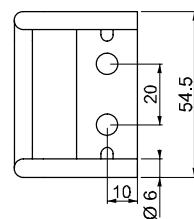
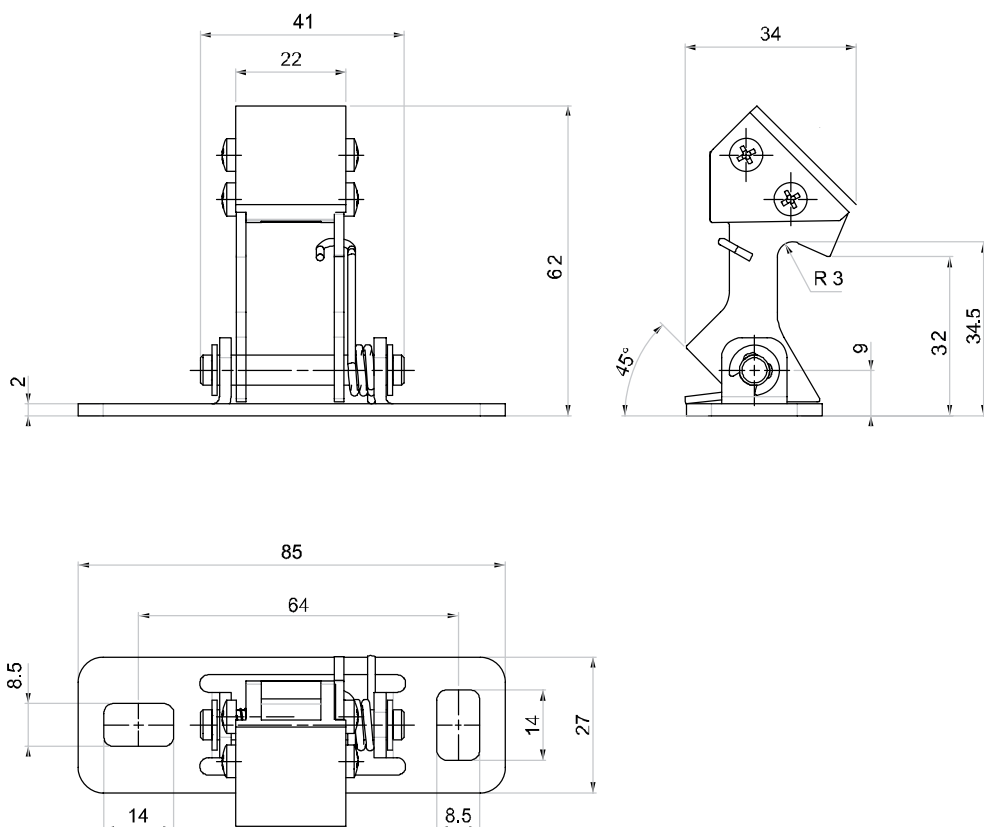
### APPLICATIONS

Generators, canopies

### MATERIAL

Steel or stainless steel

**⚠ Note:** Special square-base screws are included



## CAM STRIKING PLATE

016 A71



- Striking plate.
- Custom sizes available

### PRODUCT CODE

176 - M - F  
GROUP CODE MATERIAL FINISH

MATERIAL	F	FINISH	F
Steel	6	Chrome	1
Stainless steel	4	No finish	0

