

Klima•flexTM
VENTILATION SYSTEMS



Klima-flexTM
VENTILATION SYSTEMS



180°

Opening angle



Universal LH / RH



Adjustable 3 mm



Lift off

1
Rod latch systems

2
Quarter-turns

3
Hinges

4
Sealing profiles

5
Miscellaneous

6
Stainless

COMPRESSION LATCHING HINGE WITH SAFETY CATCH - SYSTEM KLIMAFLEXTM

180° Hinge-Latch, or latch hinge that may be used as hinge or latch according to need. Allows you to open door as left- or right hinged door, or to remove door completely. Universal left- and right assembly. Provides 6 mm compression and has a built-in safety catch for safe opening of pressurized doors.

Clicks into distinct open and closed position for tactile feedback.

Vertical adjustability together with guidance between door and frame parts, makes it easier than ever to get the perfect sealed door. Available in non-locking, keyed and tool operated version. Also customizable with your logotype.

Note that a normal panel will need four units in order to operate as either left-open, right open, or completely removable. Mount the door part with blind rivets (pop-rivets). The frame part may be mounted with screws or blind rivets.

No problems with thermal break as units are surface-mounted on to door and frame parts, resulting in no parts intruding through the double skinned doors.

Meets the requirements for sealing level L1 regarding positive or negative air pressure according to DIN EN 1886.

Logotypes, other inserts, other colours and offsets from 0 - 25 mm offered upon request. Products marked with * are key-locking and are supplied with two keys. Keys for insert "Recessed Hexagon 10" are found on page 2-380.

MATERIAL:

Door part and handle: Glass fiber reinforced polyamide (PA6).
Frame part and latching cam: Zinc die cast, black powder coated.

Hinge pin and assembly pins: Stainless steel.

COMPRESSION LATCHING HINGE WITH SAFETY CATCH - SYSTEM KLIMAFLEXTM

P/N	Description	Offset
2651-400000	Non-locking	No offset
2651-400080	Keyed IL101 *	No offset
2651-400035	Recessed Hexagon 10	No offset
2651-401000	Non-locking	10 mm
2651-401035	Keyed IL101 *	10 mm
2651-401080	Recessed Hexagon 10	10 mm



Klima•flex™
VENTILATION SYSTEMS



Opening angle



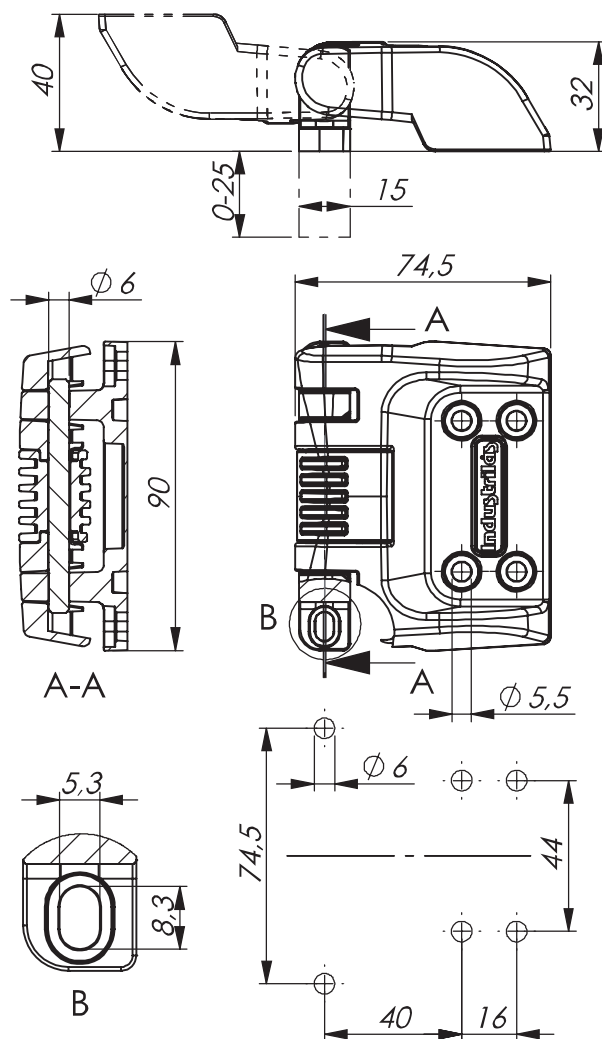
Universal LH / RH



Adjustable 3 mm



Lift off



180° HINGE FOR INSULATED DOOR - SYSTEM KLIMAFLEX™

Hinge designed for use on insulated doors in HVAC units. With door in open position, the smart quick-release function allows for complete door removal and door attachment, without the need for any tool.

The frame part is the same as for the "Compression Latching Hinge" (page 3-155). This makes it possible whenever needed to switch from a left-swing to a right-swing door, and vice versa, when this hinge is used in combination with the "Compression Latching Hinge" (page 3-155). With this setup door can also be removed completely.

Universal left and right mounting with 180° opening angle.
Surface mounted on frame and door with rivets or screws.

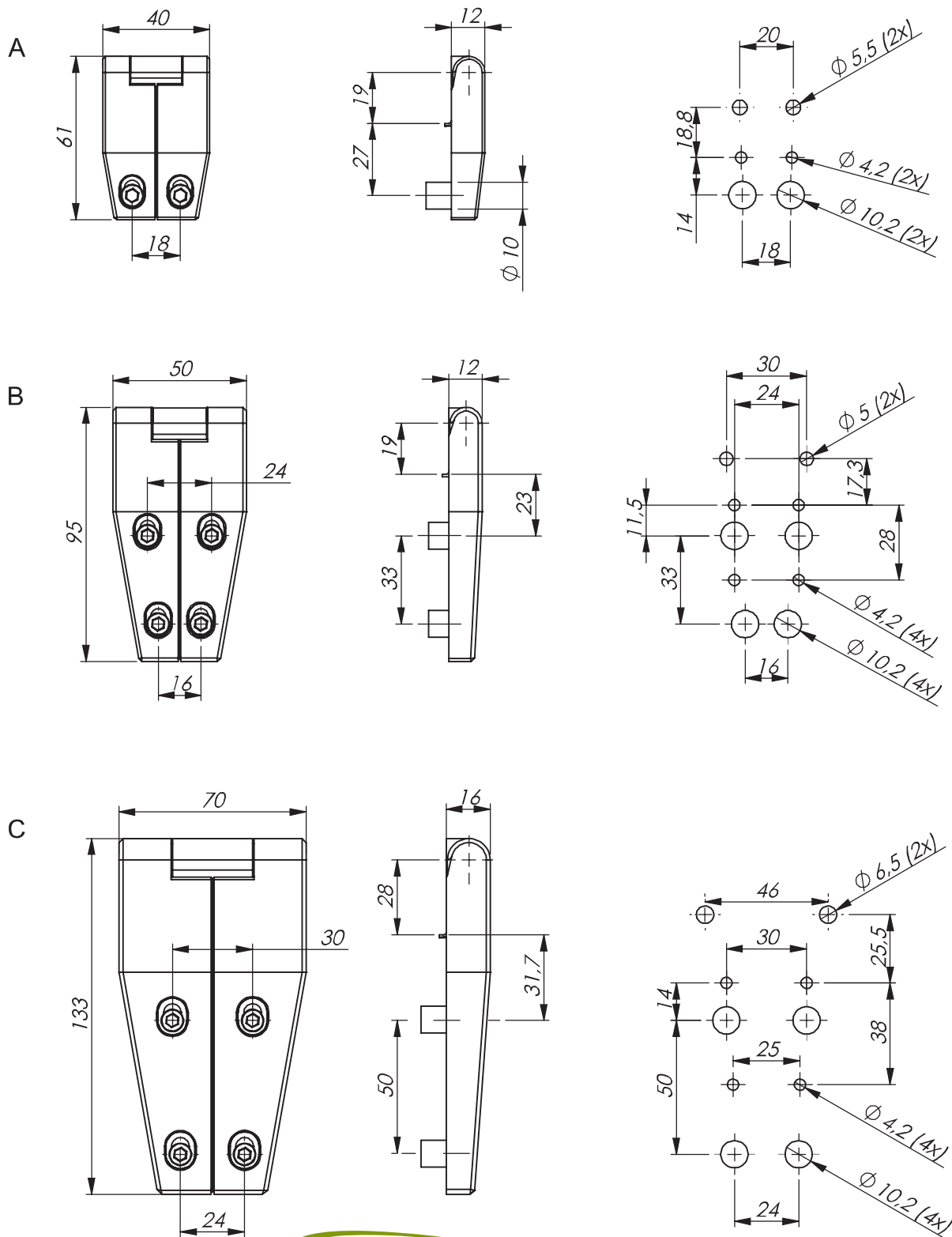
Upon request, the frame part can be supplied with other widths and offsets between 0-25 mm. The door part is prepared to display your logotype with a simple change in the moulding tool.

MATERIAL:

Door part: Glass fiber reinforced polyamide (PA6), black.
Frame part: Zinc die cast, black powder coated.
Hinge pin: Stainless steel (303).
Reinforcement bushings: brass, black zinc plated.

180° HINGE FOR INSULATED DOOR - SYSTEM KLIMAFLEX™

P/N	Description
2651-510 050	No offset (0 mm)
2650-511 050	10 mm offset



Klima•flexTM
VENTILATION SYSTEMS



Klima-flexTM
VENTILATION SYSTEMS



Opening angle



Universal LH / RH



Adjustable 3 mm

1 Rod latch systems

2 Quarter-turns

3 Hinges

4 Sealing profiles

5 Miscellaneous

6 Stainless

ADJUSTABLE HINGE FOR INSULATED DOORS - SYSTEM KLIMAFLEXTM - 180° OPENING ANGLE

Specifically designed hinges to simplify mounting on insulated doors. Adjustable in the X- and Y-axis by 3 mm. Opening angle 180°. Supplied with mounting plate.

Polyamide version: Page 3-175.

Stainless version: Page 6-355.

MATERIAL:

Hinge: Zinc die-cast, zinc plated or black texture powder coated.

Mounting plate: Zinc die-cast, zinc plated.

Pin: Steel, zinc plated.

ADJUSTABLE HINGE FOR INSULATED DOORS - SYSTEM KLIMAFLEXTM - 180° OPENING ANGLE

P/N zinc	P/N black	B	L	Drawing on page 3-160a
321150	321650	40	61	A
321151	321651	50	95	B
321152	321652	70	133	C



Klima-flex™
VENTILATION SYSTEMS



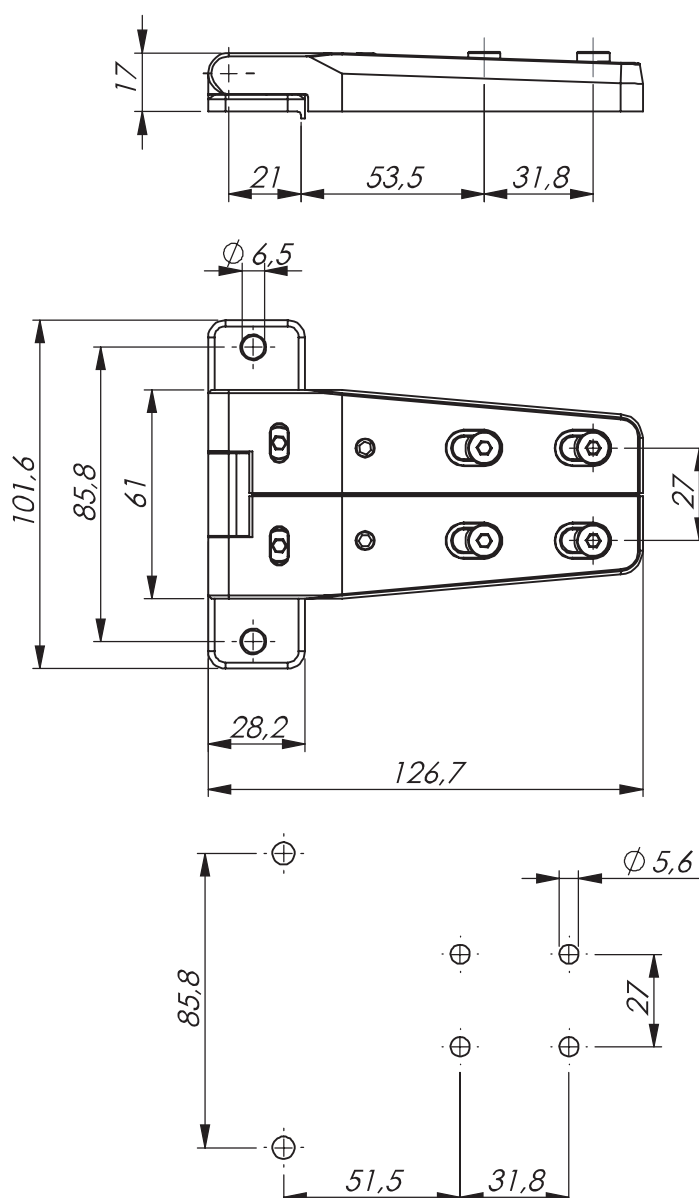
Opening angle



Universal LH / RH



Adjustable 3 mm in X, Y and Z



ADJUSTABLE 3D-HINGE FOR INSULATED DOORS - SYSTEM KLIMAFLEX™ - 180° OPENING ANGLE

Surface mounted heavy-duty hinge, especially designed for insulated doors. Adjustability in all three dimensions ensure perfect alignment of your door. Comes with a fastening plate for thin door skins. Lift-off feature when lower hinge part is removed in first step. Opening angle 180°. Available in zinc plated or powder coated zinc.

Adjustable in X, Y and Z-axes with ± 3 mm in each axis.

Supplied with adjusting screws and fastening plate.

MATERIAL:

Door part and frame part: Zinc, zinc plated or black texture powder coated.

Fastening plate: Zinc, zinc plated.

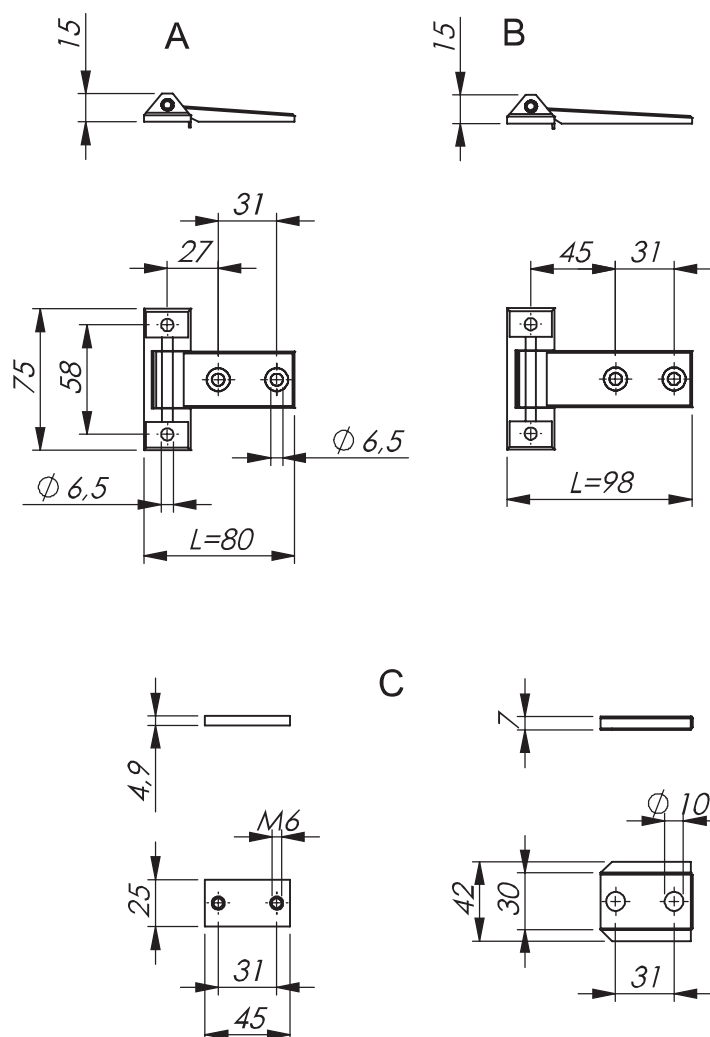
Hinge pin: Steel, zinc plated.

Hexagon screws (UNC-thread): Steel, zinc plated.

Washers: Brass, nickel plated.

ADJUSTABLE 3D-HINGE SYSTEM KLIMAFLEX™ - 180° OPENING ANGLE

P/N Zinc	P/N Black
321158	321658



Opening angle



Universal LH / RH



Adjustable

1 Rod latch systems

2 Quarter-turns

3 Hinges

4 Sealing profiles

5 Miscellaneous

6 Stainless

ADJUSTABLE HINGE FOR INSULATED DOORS - 180° OPENING ANGLE

Adjustable in the X- and Y-axis with adjustment parts and with oversized mounting holes. The hinge is mounted to a threaded plate previously attached to the inside of the door with a mounting bracket. The hinge can also be used without the adjustment parts, by using self-tapping screws. Universal right or left mounting. Opening angle: 180°.

Adjustment parts = Threaded plate with bracket (drawing C).

MATERIAL:

Hinge: Zinc die-cast, zinc plated, black texture powder coated or chrome plated.

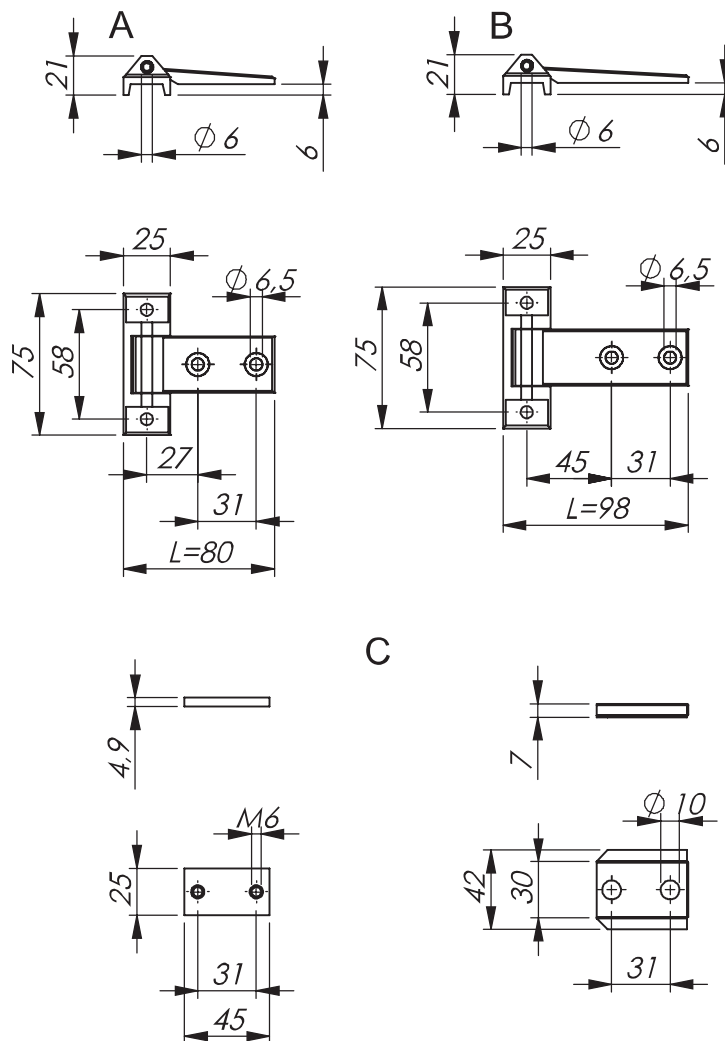
Threaded plate: Zinc die-cast, zinc plated.

Bracket: Steel, zinc plated.

Pin: Steel, zinc plated.

ADJUSTABLE HINGE FOR INSULATED DOORS - 180° OPENING ANGLE

P/N zinc	P/N black	P/N chrome	L	Adjustment parts (C)	Drawing
321129	321629	321329	80	Included	A+C
32112901	32162901	32132901	80	Not included	A
321130	321633	321930	98	Included	B+C
32113001	32163301	32193001	98	Not included	B



Opening angle



Universal LH / RH



Adjustable

ADJUSTABLE HINGE FOR INSULATED DOORS - 180° OPENING ANGLE

Adjustable in the X- and Y-axis with adjustment parts and oversized mounting holes. The hinge is mounted to a threaded plate previously attached to the inside of the door with a mounting bracket. The hinge can also be used without the adjustment parts, by using self-tapping screws. Universal right or left mounting. Opening angle: 180°.

Adjustment parts = Threaded plate with bracket (drawing C).

MATERIAL:

Hinge: Zinc die-cast, zinc plated, black texture powder coated or chrome plated.

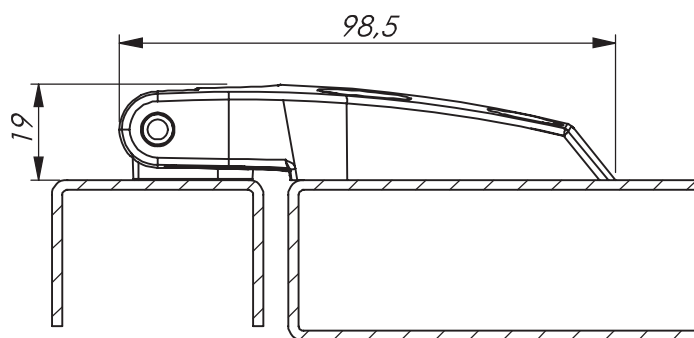
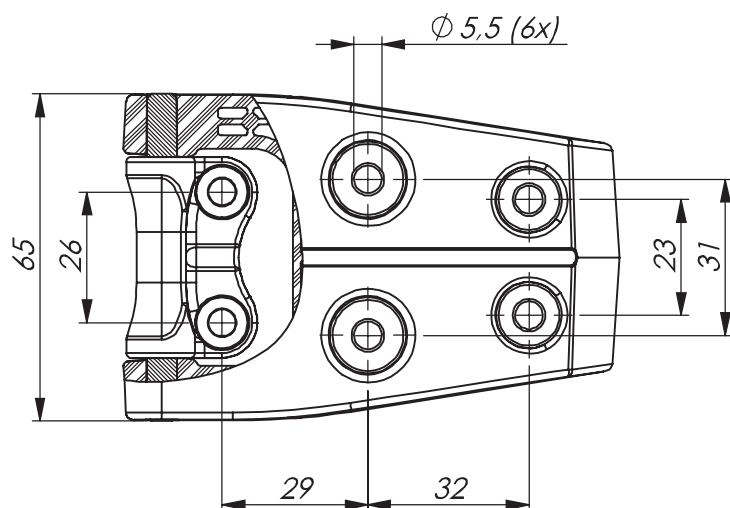
Threaded plate: Zinc die-cast, zinc plated.

Bracket: Steel, zinc plated.

Pin: Steel, zinc plated.

ADJUSTABLE HINGE FOR INSULATED DOORS - 180° OPENING ANGLE

P/N zinc	P/N black	P/N chrome	L=	Adjustment parts (C)	Drawing
321179	321679	321379	80	Included	A+C
32117901	32167901	321327901	80	Not included	A
321180	321680	321380	98	Included	B+C
32118001	32168001	32138001	98	Not included	B



Klima•flexTM
VENTILATION SYSTEMS



180°

Opening angle



Universal LH / RH

1 Rod latch systems

2 Quarter-turns

3 Hinges

4 Sealing profiles

5 Miscellaneous

6 Stainless

POLYAMIDE HINGE FOR INSULATED DOORS - SYSTEM KLIMAFLEXTM - 180° OPENING ANGLE

Polyamide hinge for insulated doors. Opening angle 180°. Universal right or left mounting. Rivet or screw mounting.

MATERIAL:

Door and frame part: Glass fibre reinforced polyamide (PA6), black.
Pin: Stainless steel (304).

POLYAMIDE HINGE FOR INSULATED DOORS - SYSTEM KLIMAFLEXTM - 180° OPENING ANGLE

P/N	Material
325070	Polyamide