



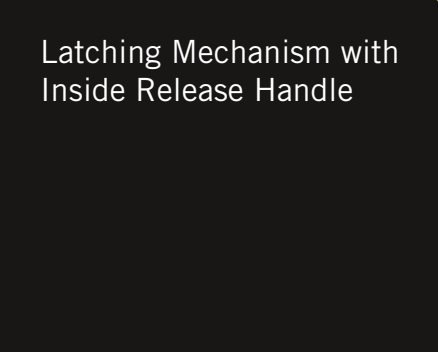
1

Custom Damper Parts



6

Safety Catch



Latching Mechanism with Inside Release Handle



2

Key-Locking Handle



Custom Corner Parts are quoted upon request

Illustration FläktWoods AB



5

Surface Mount Roller Cam - Single Point



Removable Hinge



Non-Locking Handle for In-Swing Doors



4

# KLIMAFLEX ADVANTAGE

- Provides you with a family of standard products that can be mixed and matched to meet your specific design requirements.
- Glass reinforced nylon plastic handle provides excellent durability and thermal break.
- In-swing and out-swing latching options with the same panel preparation.
- Handle is removable from latching unit resulting in less breakage during shipping and installation.
- Linking of latching units to create multi-point latching systems.
- Fine adjustment capability for compression settings.
- Internal O-ring and external gasket prevents air and water leakage.
- Innovative hinge and cam designs allow for tight door seals.
- 90° stop on handles.

You will find the full range of the KlimaFlex program in Industrilås General Catalogue, or on our web catalogue found on [www.industrilas.se](http://www.industrilas.se)



Industrilås • Box 214 • 571 23 Nässjö • Sweden

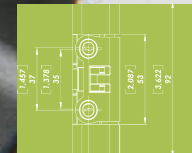
Tel: +46 (0)380-555 900 • Fax +46 (0)380-555 919 • [www.industrilas.se](http://www.industrilas.se)

**Industrilås**



# ADVANTAGE

KLIMAFLEX VENTILATION SYSTEMS



# Handles

Our innovative KlimaFlex ventilation handles are available in a variety of configurations and address many of the shortcomings of traditional designs.

Durable glass reinforced nylon construction provides UV-stability and thermal break. Tool operated, pad-lockable and key-locking versions are available to meet varied security requirements. To prevent breakage, the handles can be removed from the latching mechanism during shipping and installation. When partnered with other components in the KlimaFlex family, these handles provide an industry leading latching solution for both in-swing and out-swing doors.

Part #	Locking feature	Door movement	Material
265076-00	Non-Locking	Out-Swing	PA6
265076-10	Key-Locking	Out-Swing	PA6
265076-30	8 mm Hex tool	Out-Swing	PA6
265076-60	Pad-Lockable	Out-Swing	PA6
265076-02-16	Non-Locking	In-Swing	PA6
265076-12-16	Key-locking	In-Swing	PA6
265076-62-10	Pad-Lockable	In-Swing	PA6

Design



Durability



Flexibility

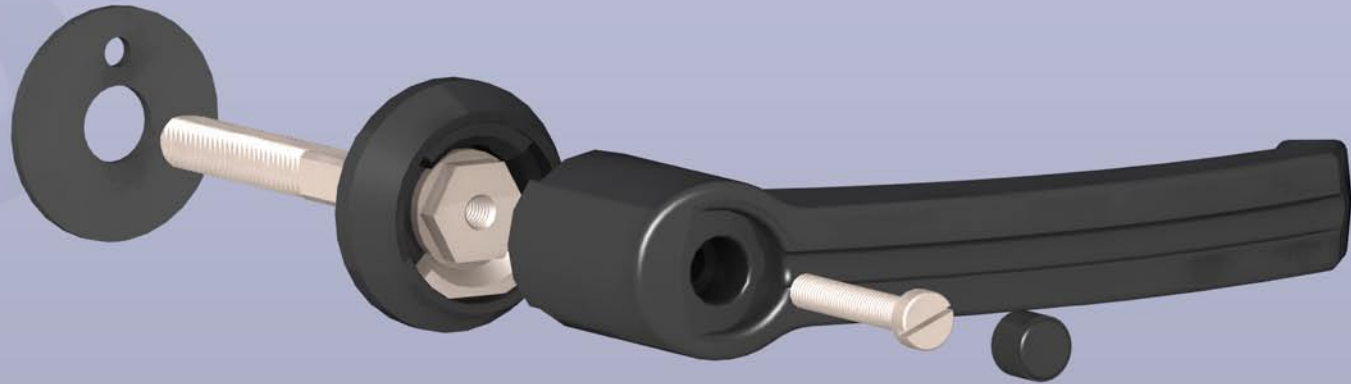


Reliability



Innovation





# Latching Mechanisms

KlimaFlex latching mechanisms are available in "through the door" and "surface mount" options. Common to all KlimaFlex latching mechanisms is a ninety degree stop limitation, durable zinc die cast construction and the ability to be paired with any of our ventilation handles, cams and accessories.

This creates unprecedented reliability and design flexibility.



Part #	Roller cam mounting	Door thickness	Shaft Material	Panel prep.	Mounting
265078-S25	Adjustable	25 mm	Steel	K-Flex	Through Door
265078-S50	Adjustable	50 mm	Steel	K-Flex	Through Door
265050-S100	Adjustable	100 mm	Steel	K-Flex	Through Door
265078-G50	Quick-mount	50 mm	Zinc	K-Flex	Through Door
265078-SC25	Adjustable	25 mm	Steel	Combi	Through Door
265078-SC50	Adjustable	50 mm	Steel	Combi	Through Door
265078-M25	Quick-mount	50 mm	Steel	K-Flex	Through Door
265078-M50	Quick-mount	25 mm	Steel	K-Flex	Through Door
265078-M60	Quick-mount	60 mm	Steel	K-Flex	Through Door
265078-D02	Quick-mount	Any thickness, in-swing doors	Zinc	Screwed	Surface mounted
265078-D01-1	Quick-mount	Any thickness, out-swing doors	Zinc	Screwed	Surface mounted

# Hinges



Our new stylish KlimaFlex light-duty hinge has P/N 325070



Part #	Removable	Adj. Axis	Width	Length	Finish	Material
321650	Yes	X and Y	40 mm	61 mm	Black Powder	Zinc
321651	Yes	X and Y	50 mm	95 mm	Black Powder	Zinc
321652	Yes	X and Y	70 mm	133 mm	Black Powder	Zinc
321129	No	X and Y	75 mm	80 mm	Zinc Plated	Zinc
321529	No	X and Y	75 mm	80 mm	Black Powder	Zinc
325070	No	None	99 mm	65 mm	Textured PA6	PA6 GF30

The KlimaFlex hinges have been designed specifically for the HVAC industry. The pivot point has been moved back to allow a door to close flat on the frame gasket. Other design features include adjustability and the ability for the door to be removed with a lift-off design. Constructed in durable Zamak 5, the KlimaFlex hinges are available in zinc plated and black powder coated finishes.

## Cams, Linkages & Accessories

We offer a wide selection of cams, linkages and accessories to complete your KlimaFlex latching system. Cams are available in a variety of configurations and provide the compression needed to keep a tight seal on HVAC enclosure doors. A safety catch is available to protect maintenance personnel in out-swing door applications. Linkages, when used with rods, allow for multiple latching points. All cams, linkages and accessories are constructed from high grade materials resulting in industry leading reliability and durability.

Part #	Description	Roller Size
2321S07-R01	Roller Cam	37,7 mm Ø x 58,5 mm long
231104	Roller Cam Short	18,0 mm Ø x 36,2 mm long
231101.1	Roller Cam S Series	17,6 mm Ø x 64,2 mm long
231101.2	Roller Cam G Series	17,6 mm Ø x 64,2 mm long
265079-10	8 mm Rod Linkage Arm	-
26210009	Inside Handle Cam	-
265076-50	Inside Release Handle, diagonal	-
265076-52	Inside Release Handle, vertical and horizontal	-